



# NeuroQ Compare



## Purpose

This quick step provides an optimal workflow scenario. Please keep in mind this application has additional workflow steps and functionality, which are detailed in the *Instructions for Use*.

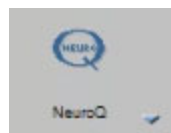


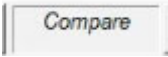
## Before you begin

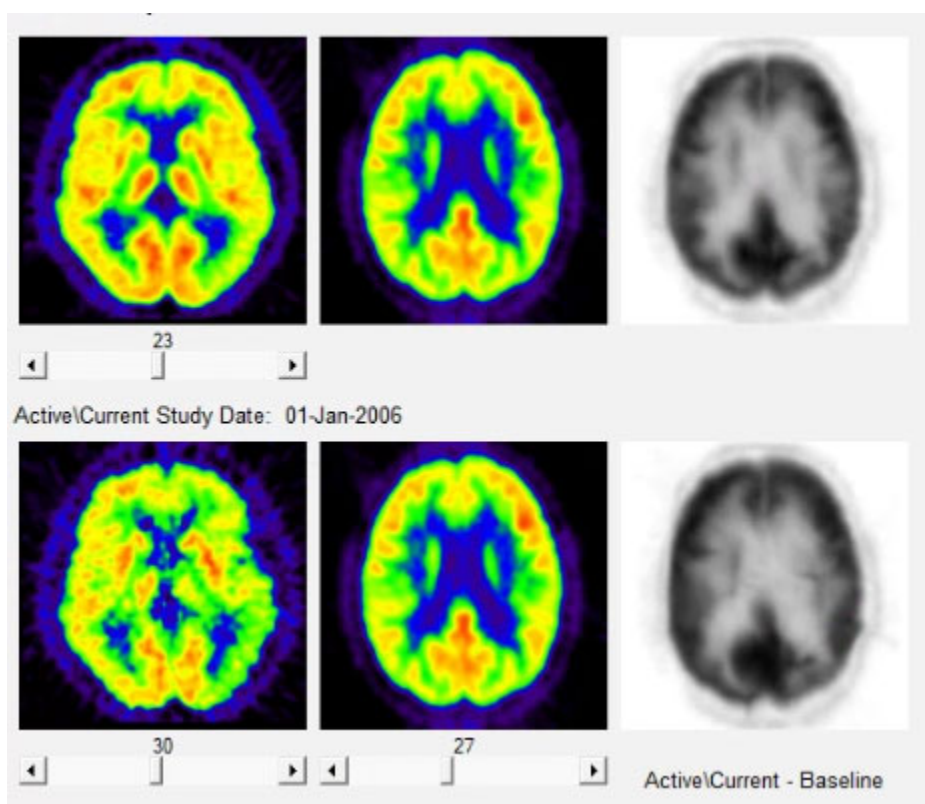
Identify the type of images that contain two studies for comparison.

# Workflow

To view PET/CT or PET/MR Fusion:



1. Select two NeuroQ processed studies with 10 iterations, and click **(NeuroQ)**.
2. Select the **Compare** button on the top toolbar. 
3. From here, use the middle slider bar in the middle row to step through the planes. The **Difference** image shows the regions in which there is at least a one standard deviation difference between the original and recent study. This analysis is performed for both the regions and clusters and shown in the two tables.



© 2021 Koninklijke Philips N.V. All Rights Reserved. Reproduction or transmission in whole or in part, in any form or by any means, electronic, mechanical or otherwise, is prohibited without prior written consent of the copyright owner.

**Limitations of Liability**

Philips has taken care to ensure the accuracy of these materials. However, Philips assumes no liability for errors or omissions and reserves the right to make changes without further notice to any products herein to improve reliability, function, or design. Philips may make improvements or changes in the product(s) or program(s) described in this content at any time.

**Educational use only**

Philips is providing these materials for educational use only. The content is not intended to provide medical advice, diagnosis, or treatment. This content should not be regarded as a substitute or replacement for the Operating Manual or Instructions for Use. Before attempting to use any Philips medical devices, you must read the Instructions for Use thoroughly, paying particular attention to all warnings, cautions, and notes it may contain. In all cases the information contained in the Instructions for Use is considered leading information.

**Terms of use**

Please see the full terms of use. [HTTP://philips.com/terms](http://philips.com/terms)

