

Rib Cage Removal for Slab and Volume Modes

The Rib Cage Removal feature is a visualization aid for contrast-enhanced Cardiac CT scans. This feature automatically removes the rib cage, allowing the review of the overall structures of the heart and its surrounding tissues without the rib cage for quick identification of potential pathologies/abnormalities, assisting in the selection of the appropriate cardiac phase to continue the analysis.

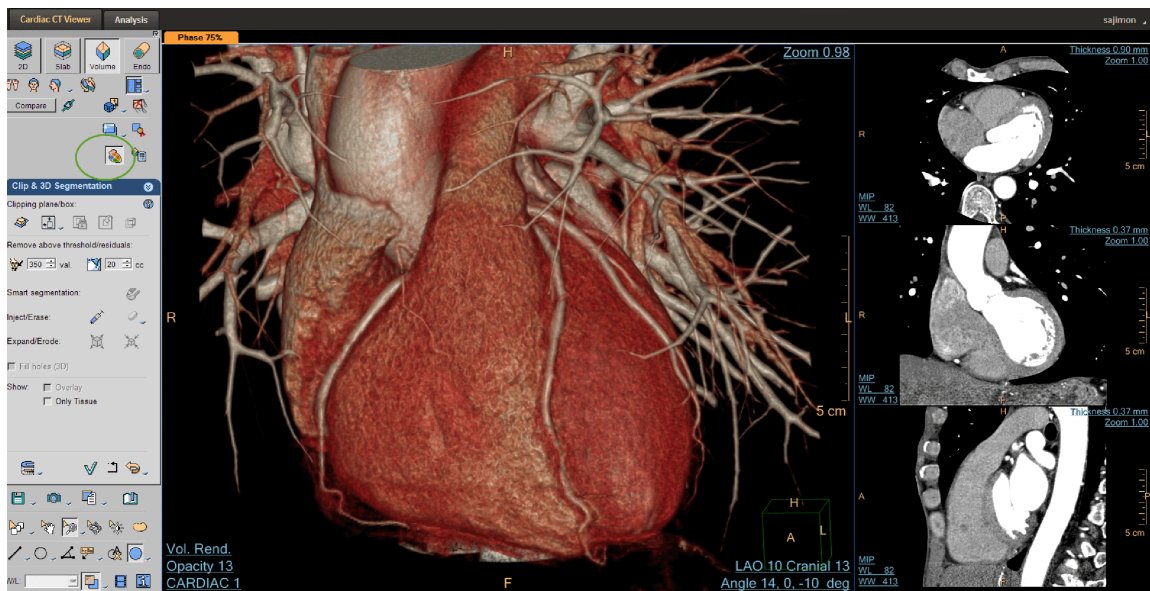
This feature contains an integrated algorithm that removes the rib cage from the cardiac CT data automatically, in both the Slab and Volume scenarios of the application.

When launching cardiac data (single phase or multi-phase), the Rib Cage Removal algorithm starts processing in the background. The algorithm processing updates appear in the status bar **Started Processing for Rib cage removal Phase "X"**.

When rib cage removal is completed, **Rib cage removal completed** appears in the status bar. The results of automatic rib cage removal are displayed on the volume viewports automatically.



Use **Display Ribcage/Hide Ribcage** icon in the control area to enable/disable rib cage display on volume or MPR images. If the icon is grayed out/disabled, rib cage results are not available.



Rib cage removal can also be enabled/disabled from the Tissues Management list.

This feature functions in parallel to other Cardiac Analysis applications such as CCA, TAVI, EP Planning, as Cardiac CT Viewer is launched automatically with these applications.

The Rib Cage Removal feature can also be enabled through Preprocessing. Both system preprocessing (under system default settings) and user defined manual preprocessing options are supported for Rib Cage Removal.

Benefits

This feature enables the user to review the overall structures of the heart and its surrounding tissues without the rib cage for quick identification of potential pathologies/abnormalities and to assist in the selection of the appropriate cardiac phase to continue the analysis.